

Gong Theatrical Dance Performance

Technical Rider:

Lighting Requirements

1. Full Stage RGB Wash

- **Fixtures:** RGB LED fixtures.
- **Purpose:** To create a vibrant, full-stage color wash, providing dynamic atmospheres and color effects throughout the performance.

2. Central Overhead PC Spot (600W/750W)

- **Fixtures:** 600W or 750W PC fixture.
- **Purpose:** Focused directly from overhead at the center of the stage, providing a defined spotlight for key moments and central focus.

3. Front Cross PC Lights (2 x 750W)

- **Fixtures:** Two 750W PC fixtures.
- **Purpose:** Positioned on the floor, angled from the left and right front corners, casting cross highlights onto the performer and sculpting the stage with depth and dimension.

4. Overhead Profile Spots for Central Focus (2 x 750W, Minimum 26°)

- **Fixtures:** Two 750W Profile Spots with a minimum 26° beam angle.
- **Purpose:** Suspended overhead, these lights work in tandem to create a focused circle of light, emphasizing the central performance area with precision.

5. Side Profile Spot (1 x 750W)

- **Fixtures:** 750W Profile Spot.
- **Purpose:** Positioned to create a secondary focal area, giving the performer additional space to move within a defined, side-lit zone.

6. Center Truss Profile and PC Spots (2 x 750W Profile, 1 x 750W PC)

- **Fixtures:** Two 750W Profile Spots and one 750W PC fixture.
- **Purpose:** The Profile Spots are used to create a dramatic corridor of light extending from the stage center to the backdrop, enhancing perspective and depth. The PC fixture provides additional backlighting for key moments.

7. General Front Wash (4-5 x 750W/1000W PC)

- **Fixtures:** 4-5 PC fixtures, 750W or 1000W.
- **Purpose:** Even front lighting from the truss, ensuring smooth, balanced illumination across the stage without harsh shadows.

Sound Requirements:

- **Audio Format:** The music will be provided in WAV format.
- **Sound System:** A standard professional sound system used for dance performances will be sufficient. The system should ensure clear and balanced audio output across the stage and audience area, providing an immersive experience.

Lighting Summary:

- **Profile Spots:** 5 total (4 x 750W, minimum 26° beam, 1 x 750W for side lighting)
- **PC Fixtures:** 8-9 total (5-6 x 750W/1000W for general wash and cross lighting, 1 x 600W/750W overhead, 1 x 750W rear truss, 2 x 750W front cross)
- **RGB LED Stage Wash**

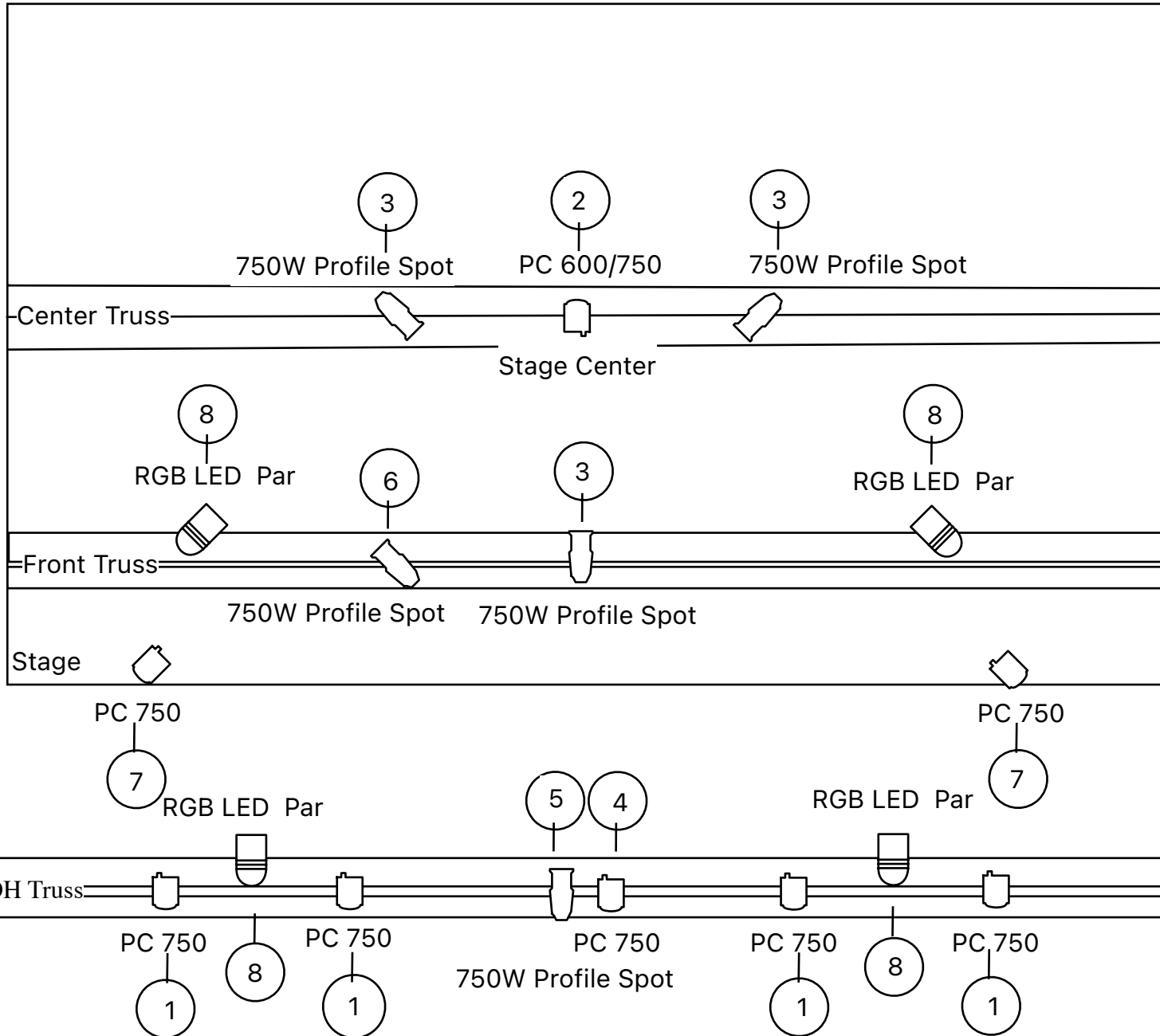
Additional Requirements

- **Setup Time:** Minimum 4 hours.
- **Stage Dimensions:** A minimum performance area of 5 meters by 5 meters is required.
- **Flooring:** The stage floor must be suitable for dance, ensuring a safe and smooth surface.
- **Local Technician:** A local technician will be required for the setup and programming of the lighting desk.

Personnel

- **Performer:** Filiz Bozkus AI / +90 5444946814 / filizbozkus@gmail.com
- **Technician (Sound&Lighting Design):** Kerem AI / +90535 4946814 / keremal09@gmail.com

GONG Theatrical Dance Performance Light Plot



Central Truss

- 2 - 1x600W or 750W PC fixture
- 3 - 2x750W Profile Spot fixture

Front Truss

- 3 - 1x750W Profile Spot fixture
- 6 - 1x750W Profile Spot fixture
- 8 - 2xRGB LED Par

FOH Truss

- 1 - 4x1000/750W PC fixture
- 4 - 1x750W PC fixture
- 5 - 1x750W Profil Spot fixture
- 8 - 2/3x RGB LED Par

On Stage

- 7 - 2x750W PC fixture